



IN LINE CENTRIFUGAL FANS

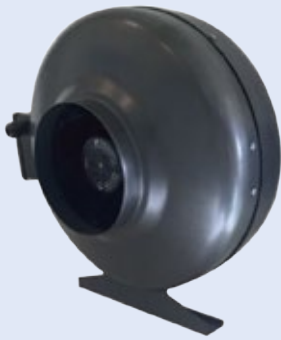
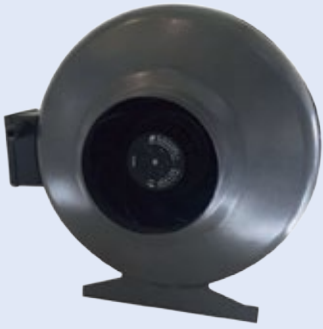


TMF

TMF In - Line Centrifugal Fans

> TMF

TMF In - Line Centrifugal Fans



GENERAL DESCRIPTION

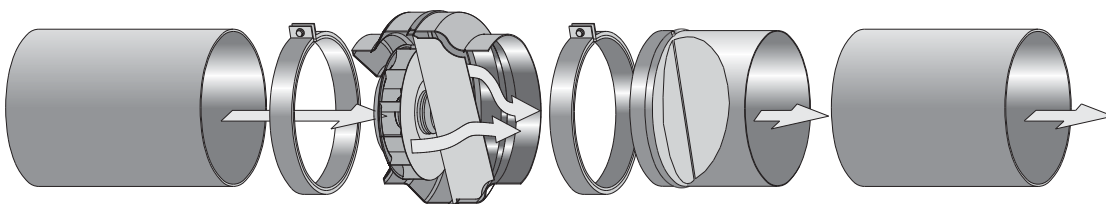
High performance centrifugal pressure in-line duct fans available in 9 duct sizes, typical of axial fans, to convey air along the same axis of the impeller. The limited dimensions and the standardized inlet and outlet sizes grant a particular ease of installation. The low noise level and the good pressure head make them ideal for industrial and residential installations, in extracting hoods and small exhausting plants, since they can be installed in any point along the duct or at the duct ends, either in intake or exhaust. They are suitable to convey clean air with temperature range $-10/40^{\circ}\text{C}$.

CONSTRUCTION

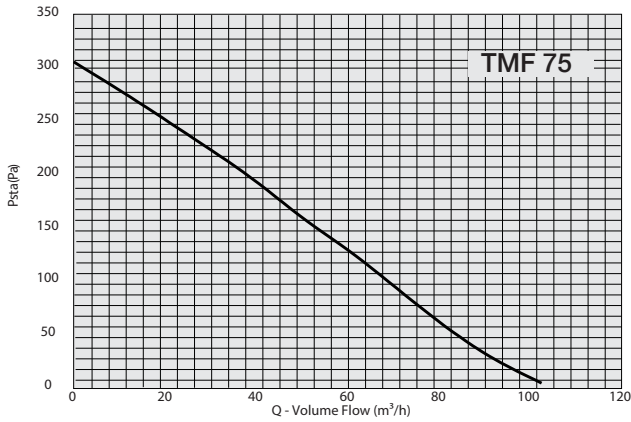
- Casing in steel sheet, protected against atmospheric agents by epoxy paint.
- Single-phase electric ball-bearing motor with non-self resetting thermal cut-out, particularly suitable for speed regulation
- Backward curved centrifugal impeller with high efficiency and low noise level. Statically and dynamically balanced according to ISO 1940
- Down stream guide vanes, for improved efficiency.
- External electric connections enclosed in a terminal box in self extinguishing technopolymer, with IP44 protection.
- Comply with EN 60335-2-80, B.T. 2006/95/ CE
- Fans are supplied with fixing brackets and manufactured in galvanized steel sheet, protected against atmospheric agents by epoxy paint. and completed with screws and wall plugs.

ACCESSORIES

- Speed regulators.
- Back-draught shutters.
- Protection guard.
- Collars for fixing to the duct.
- Silencers.

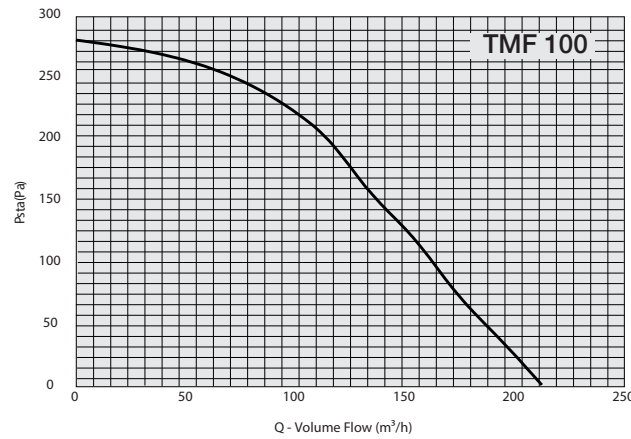


*L_p: sound pressure level measured at 3m as per AMCA standard 300
 Tested as per AMCA standard 210 at air temperature 15°C - Barometric pressure 760 mm Hg - Air specific weight 1.22 Kg/m³*



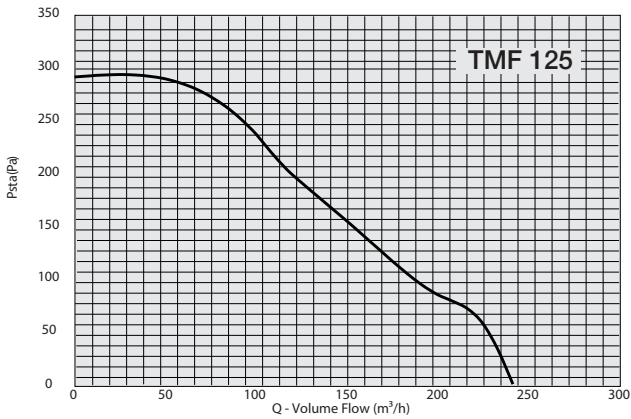
TMF-75				
Air Flow	Pressure	IP/CL	Sound	Operating Temp
m ³ /h	Pa		dB(A)	Min/Max (oC)
103	300	44/F	46	-10 / 40

Rated Power	Max. Current	Nominal Speed	Power Supply
W	A	RPM	
69	0.32	2222	220-240 V/1 Ph /50hz



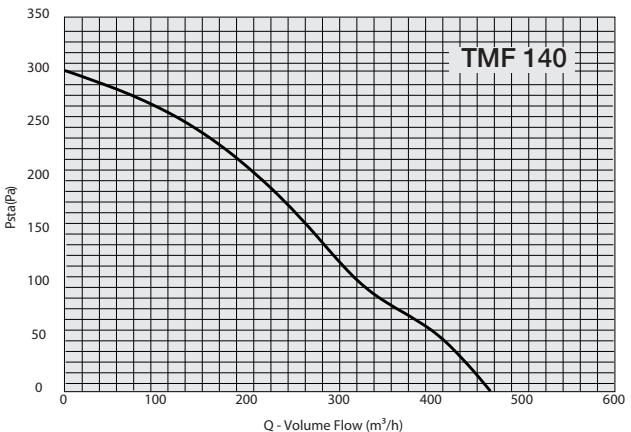
TMF-100				
Air Flow	Pressure	IP/CL	Sound	Operating Temp
m ³ /h	Pa		dB(A)	Min/Max (oC)
210	280	44/F	46	-10 / 40

Rated Power	Max. Current	Nominal Speed	Capacitor	Power Supply
W	A	RPM	uF	
69	0.32	2222	3	220-240 V/1 Ph /50hz



TMF-125				
Air Flow	Pressure	IP/CL	Sound	Operating Temp
m ³ /h	Pa		dB(A)	Min/Max (oC)
240	290	44/F	48	-10 / 40

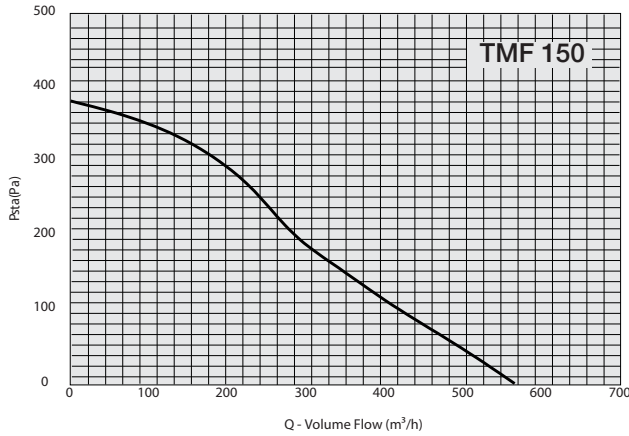
Rated Power	Max. Current	Nominal Speed	Capacitor	Power Supply
W	A	RPM	uF	
73	0.34	2204	3	220-240 V/1 Ph /50hz



TMF-140				
Air Flow	Pressure	IP/CL	Sound	Operating Temp
m ³ /h	Pa		dB(A)	Min/Max (oC)
460	300	44/F	48	-10 / 40

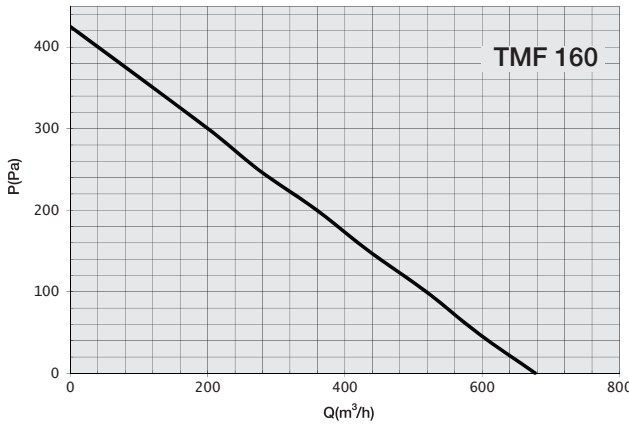
Rated Power	Max. Current	Nominal Speed	Power Supply
W	A	RPM	
99	0.44	2367	220-240 V/1 Ph /50hz

Lp: sound pressure level measured at 3m as per AMCA standard 300
 Tested as per AMCA standard 210 at air temperature 15°C - Barometric pressure 760 mm Hg - Air specific weight 1.22 Kg/m³



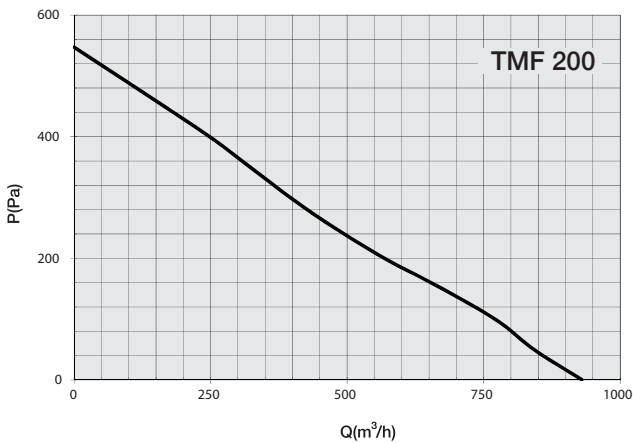
TMF-150				
Air Flow	Pressure	IP/CL	Sound	Operating Temp
m ³ /h	Pa		dB(A)	Min/Max (°C)
560	380	44/F	48	-10 / 40

Rated Power	Max. Current	Nominal Speed	Capacitor	Power Supply
W	A	RPM	µF	
99	0.44	2367	3	220-240 V/1 Ph /50hz



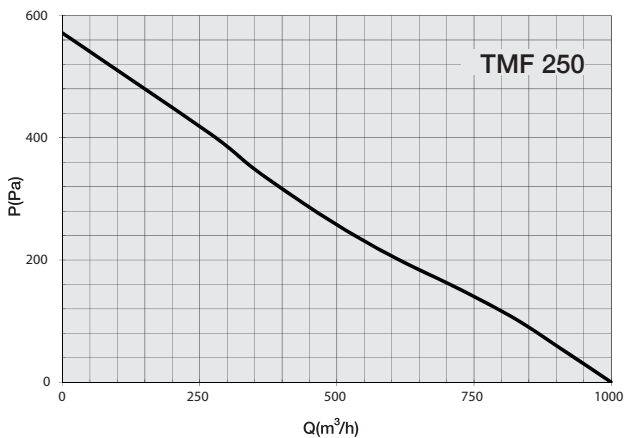
TMF-160				
Air Flow	Pressure	IP/CL	Sound	Operating Temp
m ³ /h	Pa		dB(A)	Min/Max (°C)
677	425	44/F	49	-10 / 40

Rated Power	Max. Current	Nominal Speed	Capacitor	Power Supply
W	A	RPM	µF	
107	0.48	2235	3	220-240 V/1 Ph /50hz



TMF-200				
Air Flow	Pressure	IP/CL	Sound	Operating Temp
m ³ /h	Pa		dB(A)	Min/Max (°C)
930	547	44/F	52	-10 / 40

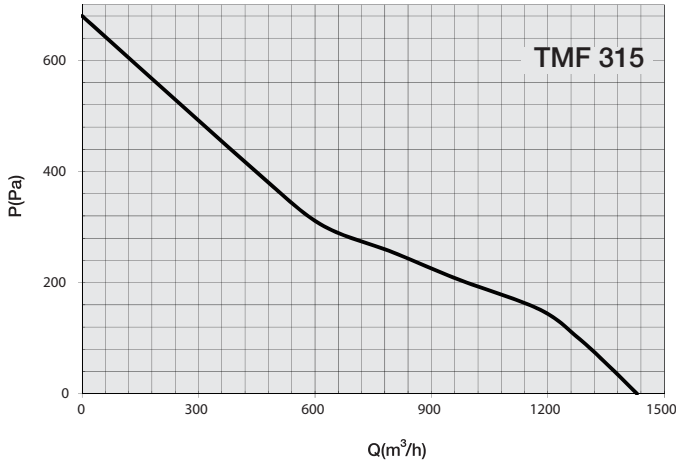
Rated Power	Max. Current	Nominal Speed	Capacitor	Power Supply
W	A	RPM	µF	
177	0.80	2326	5	220-240 V/1 Ph /50hz



TMF-250				
Air Flow	Pressure	IP/CL	Sound	Operating Temp
m ³ /h	Pa		dB(A)	Min/Max (°C)
1000	571	44/F	56	-10 / 40

Rated Power	Max. Current	Nominal Speed	Capacitor	Power Supply
W	A	RPM	µF	
176	0.79	2237	5	220-240 V/1 Ph /50hz

*L_p: sound pressure level measured at 3m as per AMCA standard 300
 Tested as per AMCA standard 210 at air temperature 15°C - Barometric pressure 760 mm Hg - Air specific weight 1.22 Kg/m³*

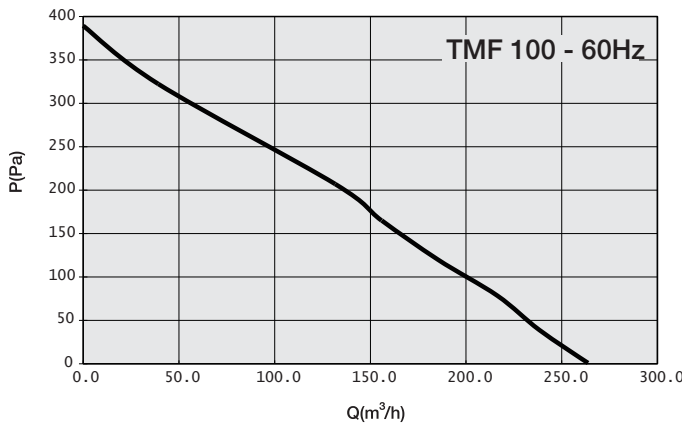


TMF-315				
Air Flow	Pressure	IP/CL	Sound	Operating Temp
m ³ /h	Pa		dB(A)	Min/Max (oC)
1430	680	44/F	56	-10 / 40

Rated Power	Max. Current	Nominal Speed	Capacitor	Power Supply
W	A	RPM	uF	
262	1.20	2178	7	220-240 V/1 Ph /50hz

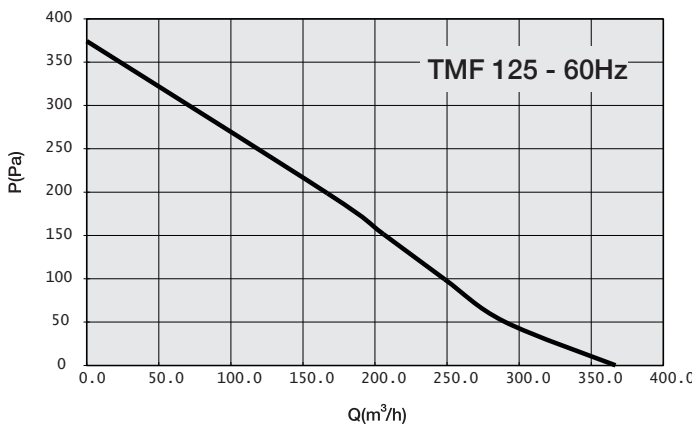
PERFORMANCE

TMF-60Hz



TMF-100				
Air Flow	Pressure	IP/CL	Sound	Operating Temp
m ³ /h	Pa		dB(A)	Min/Max (oC)
264	389	44/F	61	-10 / 40

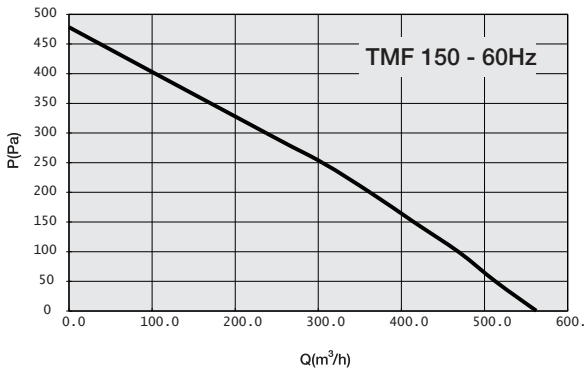
Rated Power	Max. Current	Nominal Speed	Capacitor	Power Supply
W	A	RPM	uF	
86	0.40	2390	3	220-240 V/1 Ph /60hz



TMF-125				
Air Flow	Pressure	IP/CL	Sound	Operating Temp
m ³ /h	Pa		dB(A)	Min/Max (oC)
367	374	44/F	61	-10 / 40

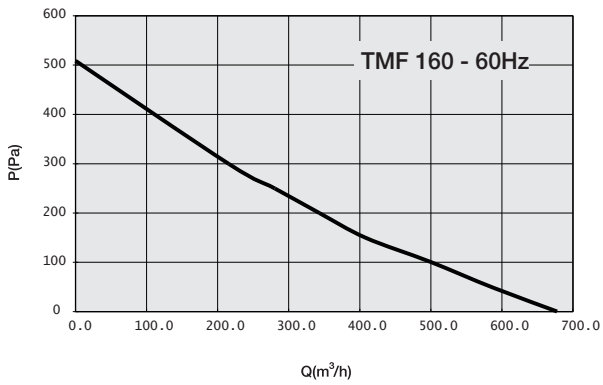
Rated Power	Max. Current	Nominal Speed	Capacitor	Power Supply
W	A	RPM	uF	
92	0.42	2300	3	220-240 V/1 Ph /60hz

*L_p: sound pressure level measured at 3m as per AMCA standard 300
 Tested as per AMCA standard 210 at air temperature 15°C - Barometric pressure 760 mm Hg - Air specific weight 1.22 Kg/m³*



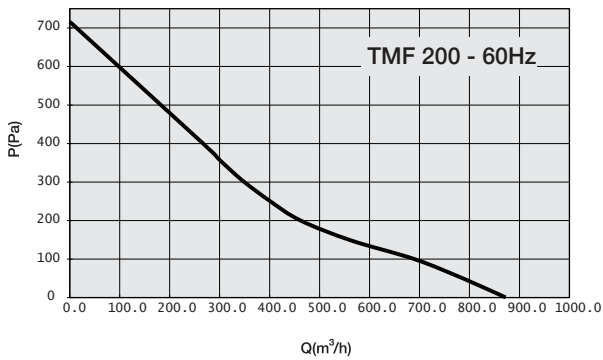
TMF-150				
Air Flow	Pressure	IP/CL	Sound	Operating Temp
m ³ /h	Pa		dB(A)	Min/Max (oC)
562	478	44/F	65	-10 / 40

Rated Power	Max. Current	Nominal Speed	Capacitor	Power Supply
W	A	RPM	uF	
121	0.55	2520	3	220-240 V/1 Ph /60hz



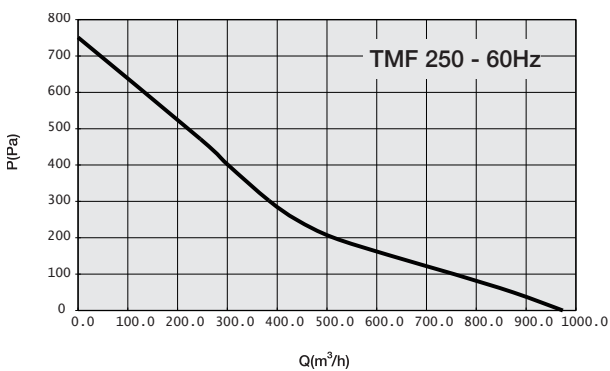
TMF-160				
Air Flow	Pressure	IP/CL	Sound	Operating Temp
m ³ /h	Pa		dB(A)	Min/Max (oC)
678	509	44/F	65	-10 / 40

Rated Power	Max. Current	Nominal Speed	Capacitor	Power Supply
W	A	RPM	uF	
130	0.59	2100	3	220-240 V/1 Ph /60hz



TMF-200				
Air Flow	Pressure	IP/CL	Sound	Operating Temp
m ³ /h	Pa		dB(A)	Min/Max (oC)
872	716	44/F	67	-10 / 40

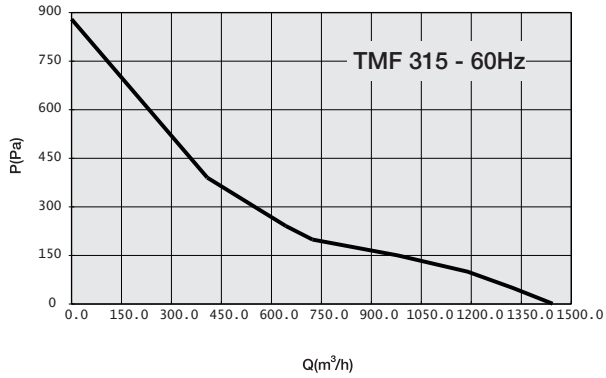
Rated Power	Max. Current	Nominal Speed	Capacitor	Power Supply
W	A	RPM	uF	
218	0.98	2280	5	220-240 V/1 Ph /60hz



TMF-250				
Air Flow	Pressure	IP/CL	Sound	Operating Temp
m ³ /h	Pa		dB(A)	Min/Max (oC)
974	751	44/F	68	-10 / 40

Rated Power	Max. Current	Nominal Speed	Capacitor	Power Supply
W	A	RPM	uF	
212	0.95	2340	5	220-240 V/1 Ph /60hz

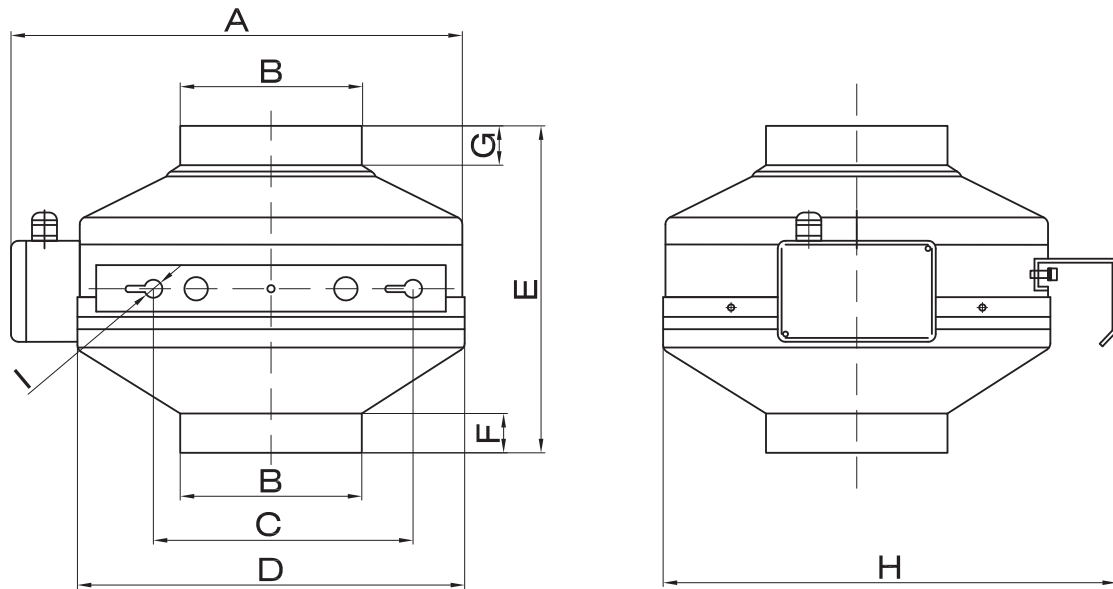
*L_p: sound pressure level measured at 3m as per AMCA standard 300
 Tested as per AMCA standard 210 at air temperature 15°C - Barometric pressure 760 mm Hg - Air specific weight 1.22 Kg/m³*



TMF-315		IP/CL	Sound	Operating Temp
Air Flow	Pressure	44/F	dB(A)	Min/Max (oC)
m3/h	Pa		70	-10 / 40
1444	880			

Rated Power	Max. Current	Nominal Speed	Capacitor	Power Supply
W	A	RPM	uF	
305	1.34	2540	7	220-240 V/1 Ph /60hz

DIMENSIONS



Model	A	B	C	D	E	F	G	H	I	Kg*
TMF 75	286	Ø98	170	Ø243	196	22	22	275	2xØ13	3.00
TMF 100	286	Ø98	170	Ø243	196	22	22	275	2xØ13	3.00
TMF 125	286	Ø125	170	Ø243	196	30	25	275	2xØ13	3.00
TMF 140	377	Ø147	170	Ø333	217	22	25	365	2xØ13	4.50
TMF 150	377	Ø147	170	Ø333	217	22	25	365	2xØ13	4.50
TMF 160	377	Ø160	170	Ø333	217	25	25	365	2xØ13	5.50
TMF 200	377	Ø198	170	Ø333	216	25	25	365	2xØ13	5.70
TMF 250	377	Ø247	170	Ø333	216	36	25	365	2xØ13	6.00
TMF 315	445	Ø315	170	Ø402	255	40	32	434	2xØ13	6.30

*Dimensions in mm
 Indicative weights

SHUTTER

Back draught throttle shutter in galvanized steel sheet with gasket on the closing of the fins, for greater sealing and less noise transmission.



Type
AXC 100
AXC 125
AXC 150
AXC 160
AXC 200
AXC 250
AXC 315
AXC 355

DUCT CLAMPS

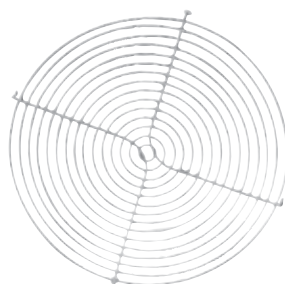
Duct clamp manufactured in galvanized steel sheet, inside lined with expanded polyurethane. Necessary to connect the fan to the duct.



Type
AXC 100
AXC 125
AXC 150
AXC 160
AXC 200
AXC 250
AXC 315
AXC 355

PROTECTION GUARD

Set composed by protection guard manufactured in steel rod protected against the corrosion and screws for the fixing on the round side of the fan. ATTENTION: this accessory is compulsory if the side of the fan is not ducted or protected in any other way.



Type
AXC 100
AXC 125
AXC 150
AXC 160
AXC 200
AXC 250
AXC 315
AXC 355



Maico Ventilation Pvt. LTD
Plot I-02, Part-1, Khed City, Rajgurunagar, Pune – 410505, Maharashtra, India

www.maico.co.in
enquiry@maico.co.in

Features and technical data can vary without prior notice without modifying the main functional parameters of the products. All trademarks mentioned are the property of Maico. All rights reserved.

Code:TMF/01/17